

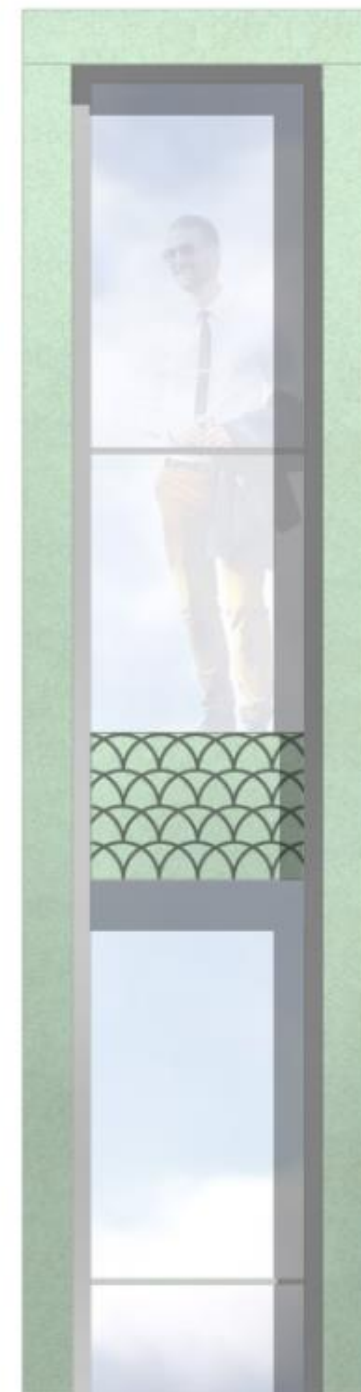
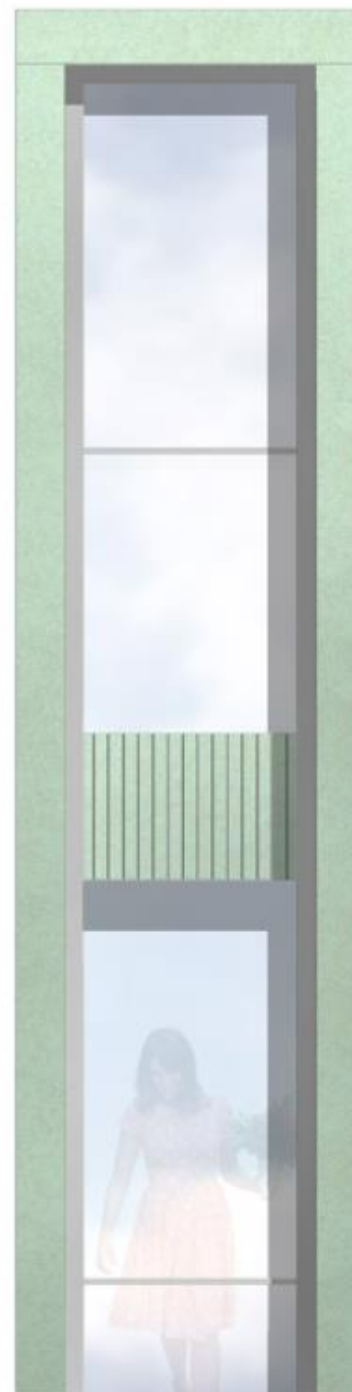
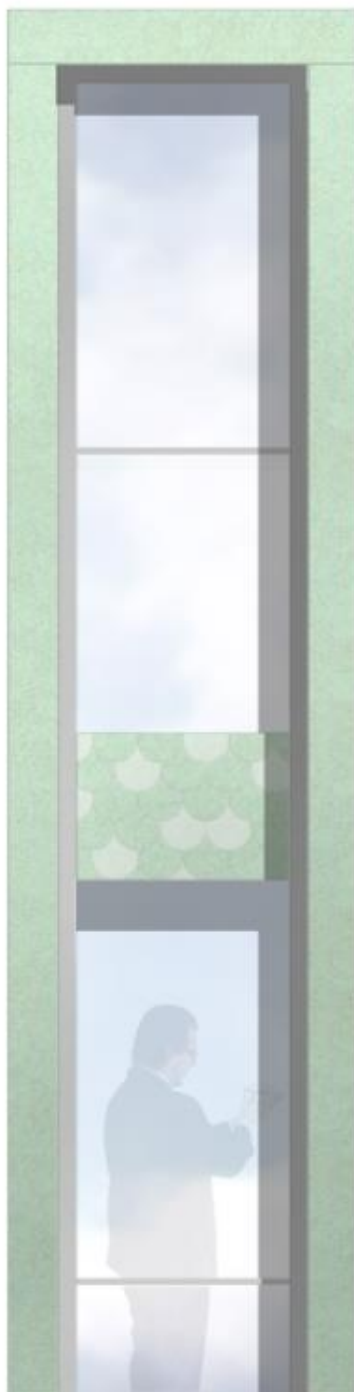


Welcome to
BREWERS' HALL

Tucked away on a private, quiet square behind London Wall, this intimate livery hall offers an elegant, adaptable event space for exclusive hire.

The traditional ambience of the wood-panelled rooms contrasts with the incredible flexibility of the space. Floor-to-ceiling windows ensure natural daylight is in abundance. The Hall creates a sense of history and occasion to enhance every event, making guests feel honoured and privileged.

Take a look at our virtual tour [here](#).

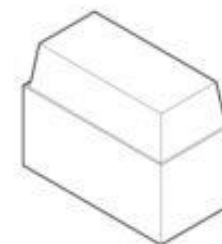
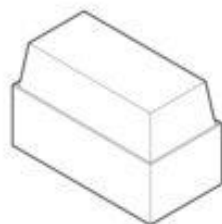
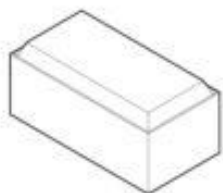


The Redevelopment

One of the City's most sought after venues superbly situated in Aldermanbury Square, has recently undergone a redevelopment. You'll be welcome into a fresh venue, where you can be assured that only the highest possible standards will do.

The whole first floor space is let on an exclusive basis for each client allowing privacy and complete discretion. Whether you are organising a meeting or a bespoke lunch, dinner or reception, the venue guarantees the service and style that you would expect from a traditional Livery Hall.

Three communicating main rooms and a stunning new gallery reception area provide an adaptable space for all kinds of events. Air conditioned throughout and fully equipped with AV, Brewers' Hall provides a modern experience in a rich historical setting.



Due to the redevelopment, the following images and their descriptions may be subject to some variation.



The Livery Hall

With floor to ceiling windows that ensure natural light, the Main Hall creates a sense of history and occasion to enhance any event. The traditional oak wood panelling, together with fine chandeliers, make it the perfect backdrop for meetings and receptions.

The Court Room

The perfect space for luncheons and boardroom style meetings. The room is wood panelled and has a marble fireplace with a Carrara panel by Sir Charles Wheeler PRA. Communicating doors to the Livery Hall form an adaptable space that can be used as an independent meeting space or an extension to the Hall.





The Committee Room

The Committee Room is ideal for private dining, a smaller break-out space or an organiser's office. Communicating doors lead directly to the Court Room, as well as the main landing area, allowing an adaptable use of the space.

Fine Dining

Exclusive hire of the Court Room & Livery Hall

18.30 - 23.00 (bar closes at 22:30)

2 glasses prosecco on arrival

3 course fine dining menu with Fairtrade coffee and
petits fours

½ bottle house wine per person

½ bottle mineral water per person

Contemporary linen, glassware, cutlery and crockery

£160 + VAT per person based on 30 - 49 guests

£135 + VAT per person based on 50 - 69 guests

£115 + VAT per person based on 70 - 80 guests

Looking to stand out?

Enhance your offer with our [plant based tasting menu](#), for an additional £15.00 + VAT per person? Explore our [curated menus](#) from the best and brightest minds in food - Think summer lunch buffets by Ixta Belfrage, from Yotam Ottelgenghi's Nopi Restaurant, one of [the most influential women in food](#), or [small plates](#) by Jose Pizzaro, the [Godfather of Spanish cooking in the UK](#). Explore more of our curated menus and discuss with your event manager.



Please note, we offer one starter, one main course and one pudding for the group. We require menu selections and dietary requirements 2 weeks in advance. The price quoted is valid for 1 month from quotation and we hold dates for a maximum of 2 weeks, upon request only. Prices may vary depending on dates.

Standing Reception

Exclusive hire of the Court Room & Livery Hall

18.30 - 23.00 (bar closes at 22:30)

2 glasses prosecco on arrival

Five Item Bowl Food Menu

Unlimited drinks package: beer | wine | soft drinks
(19.30 -22.30)

Contemporary linen, glassware, cutlery and crockery

£120 + VAT per person based on 50 - 64 guests

£105 + VAT per person based on 75 - 99 guests

£99 + VAT per person based on 100 - 120 guests

Looking to stand out?

How about starting your evening with some **bite size delights** from our canape menu. Or perhaps something sweet, with a **Churros, Doughnuts and Cannoli's street food station** and an **afternoon tea stall**. Explore our curated menus and discuss with your event manager.



Please note, we offer the same menu choices for the group. We require menu selections and dietary requirements 2 weeks in advance. The price quoted is valid for 1 month from quotation and we hold dates for a maximum of 2 weeks, upon request only. Prices may vary depending on dates.

Half Day Meetings at Brewers' Hall

Morning Meetings

Classic

Exclusive hire of the Court Room & Livery Hall
08.00 - 12.00

Tea, coffee with chefs selection of freshly
baked goods on arrival

Mid morning tea, coffee and biscuits

30	50	75
£89.00	£65.00	£55.00

Health & Wellbeing

Exclusive venue hire | 08.00 - 12.00

Tea, coffee on arrival

Health and Wellbeing - breakfast menu
endorsed by Dr Rupri Aujla

Mid morning tea, coffee served with
Rainbow fruit skewers and Oatmeal,
peanut butter bar

30	50	75
£118.50	£94.50	£84.50

Afternoon Meetings

Classic

Exclusive hire of the Court Room & Livery Hall
13.00 - 17.00

Tea, coffee with chefs selection of freshly
baked goods on arrival

Mid morning tea, coffee and biscuits
Lunch of your choice

	30	50	75
Simple Sandwich	£92.00	£70.00	£60.00
Working Lunch	£97.00	£75.00	£65.00
Bento Box	£97.00	£75.00	£65.00
Great British Picnic	£102.00	£80.00	£70.00
Fork Buffet	£107.00	£85.00	£75.00

Fuel not Feed

Exclusive hire of the Court Room & Livery Hall
13.00 - 17.00

Tea, coffee on arrival

Health and Wellbeing - breakfast menu
endorsed by Dr Rupri Aujla

Mid morning tea, coffee served with Rainbow
fruit skewers and Oatmeal, peanut butter bar

	30	50	75
Working Lunch	£109.00	£87.00	£77.00
Fork Buffet Lunch	£119.00	£97.00	£87.00



Please note all prices are exclusive of 20% VAT e.g. £89.00 + VAT is £106.80 inc VAT.

Please note, we offer the same menu choices for the group. We require menu selections and dietary requirements 2 weeks in advance. The price quoted is valid for 1 month from quotation and we hold dates for a maximum of 2 weeks, upon request only. Prices may vary depending on dates.

Full Day Meetings at Brewers' Hall

Classic Day

		30	50	75
Exclusive hire of the Court Room & Livery Hall 09.00 - 17.00	Simple Sandwich	£115.00	£83.00	£65.00
Tea, coffee & pastries on arrival	Working Lunch	£120.00	£88.00	£70.00
Mid morning tea, coffee and biscuits	Bento Box	£120.00	£88.00	£70.00
Lunch of your choice	Great British Picnic	£125.00	£93.00	£75.00
Afternoon tea, coffee & biscuits	Fork Buffet	£130.00	£98.00	£80.00

Our classic day offers everything you need for your day at Brewer's Hall. If you're looking to enhance you're offering further our menu offers a wide range of options, from a health and wellbeing endorsed breakfast menu by Dr Rupi, to breakfast baps for those looking for something more substantial - we have it covered. We've put together some sample packages below, but please do get in touch if you'd like to create a bespoke offer together.

Fuel not Feed

Exclusive hire of the Court Room & Livery Hall
09.00 - 17.00

Tea, coffee on arrival

Chef's selection of freshly baked goods and our signature granola - oats, cherries, chia seeds, earl grey low-fat yoghurt and honey

Mid morning tea, coffee served with Oatmeal, peanut butter bar & Cacao, date and coconut energy truffles

Lunch of your choice

Afternoon tea and coffee served with skinny blueberry muffin with oats and bran

	30	50	75
Bento Box or Working Lunch	£136.50	£104.50	£86.50
Fork Buffet Lunch	£146.50	£114.50	£96.50

Health & Wellbeing

Exclusive hire of the Court Room & Livery Hall
09.00 - 17.00

Tea, coffee on arrival

Health and Wellbeing - breakfast menu endorsed by Dr Rupi Aujla

Mid morning tea, coffee served with Rainbow fruit skewers and Oatmeal, peanut butter bar

Lunch of your choice

Afternoon smoothie shots with Cacao, date and coconut energy truffles

	30	50	75
Working Lunch	£162.50	£130.50	£112.50
Fork Buffet Lunch	£172.50	£140.50	£122.50

Please note all prices are are exclusive of 20% VAT e.g. £115.00 + VAT is £138.00 inc VAT.



Please note, we offer the same menu choices for the group. We require menu selections and dietary requirements 2 weeks in advance. The price quoted is valid for 1 month from quotation and we hold dates for a maximum of 2 weeks, upon request only. Prices may vary depending on dates.



You've chosen Brewer's Hall,
why not make the most of it?

We've partnered with Ale Hunters to bring you
the perfect addition to your day - a tutored beer
tasting.

What you get

- A tutored tasting from an accredited Beer Sommelier, Certified Cicerone® and international beer judge.
- Includes a profile of the brewery, insight into how beer is made and a history of the beer style
- 5 beers of different styles (gluten free and low/no alcohol options available)
- Tuition on 'How to taste beer' and how beer is made from grain to glass

Duration

- Tastings run for approximately two hours but are not constricted by time
- Tastings can also be tailored to fit your individual needs

£55 + VAT per person

(Minimum numbers apply, please speak to your event manager)

Please note that if you require a venue hire extension additional charges will apply,
please speak with your event manager. Minimum numbers apply and subject to
availability, please speak to your event manager

Enhance your event

Unlimited Sparkling reception
£17.50+VAT per person & hour

Unlimited wine, beer & softs (3 hrs)
£35.00 +VAT per person

Chefs choice, 4 canapes
£14.00 +VAT per person

4 item bowl food menu
£26.00 +VAT per person

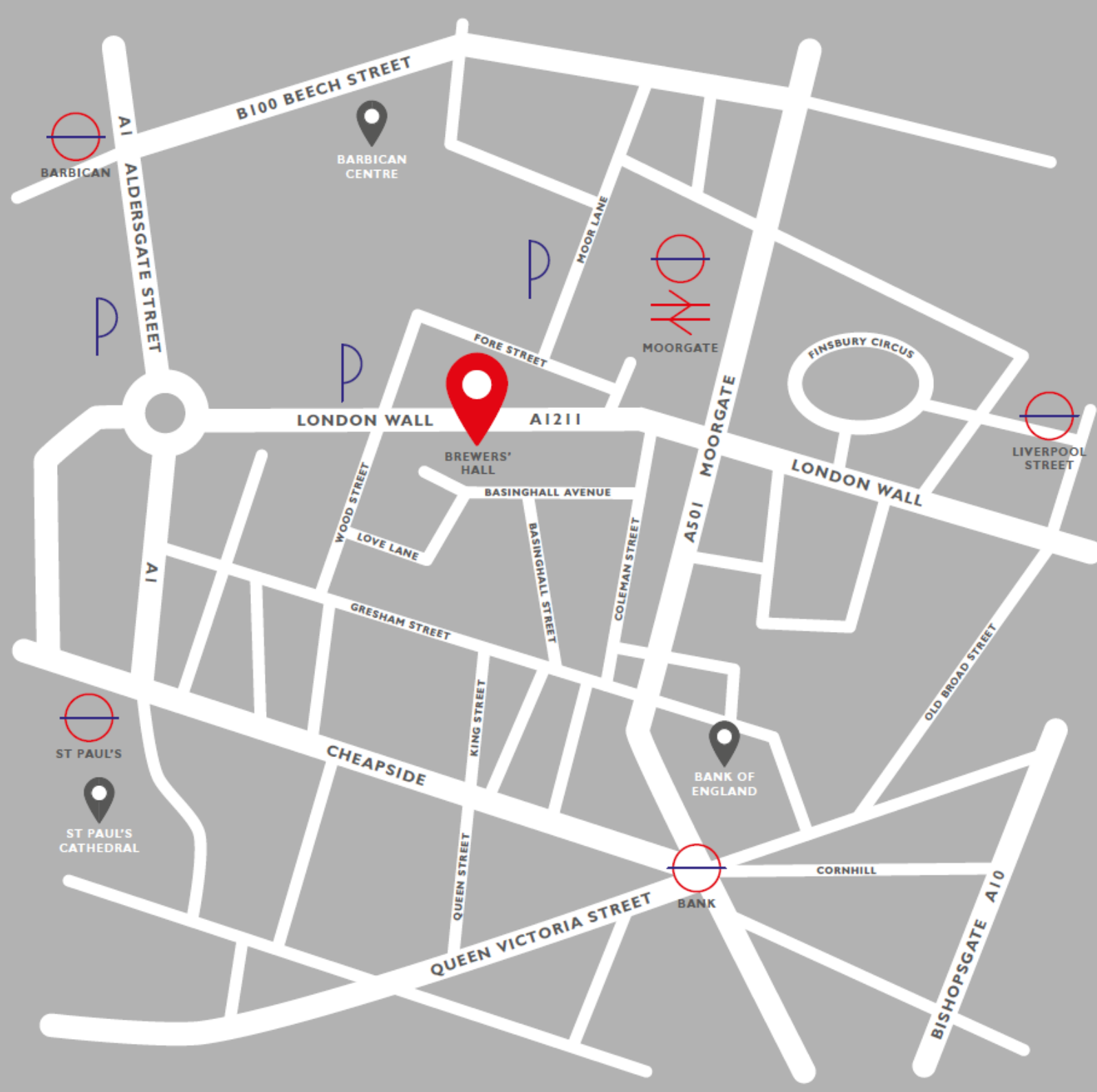
Upgraded Linen
Available upon request

Upgraded Crockery
Available upon request

Furniture Upgrades
Available upon request

Design/Entertainment
Available upon request





How to find us

Moorgate
Barbican
Liverpool Street

BREWERS' HALL
ALDERMANBURY SQUARE,
EC2V 7HR

When organising or attending an event at one of our venues, your health and wellbeing is our top priority. We are continuously monitoring and acting on advice and guidance from the UK government, Public Health England and the World Health Organisation.





eve and Venues by CH&CO

If you're keen to explore more Venues by CH&CO, we can help. As part of the CH&CO family, eve is the platform for our clients to access all the Venues by CH&CO are proud to offer, including those from our partners Create Food and Ultimate Experience.

With unique [venues](#) across the capital (and further afield), we can help you pinpoint the perfect place for your event. Speak to us today for more options and consider it done. Dinner party. Summer party. Christmas party. eve is here to help you find the perfect place in London for your corporate event -whatever the season, reason, brief or budget. So, what would you like to see?

eve



BREWERS' HALL